



ACCOUNTING SYSTEMS
INCORPORATED

ASI Additions

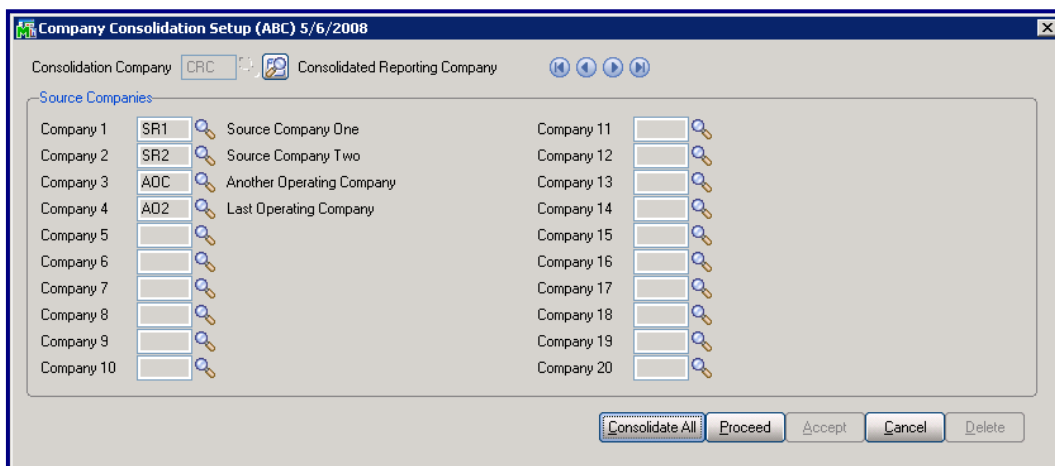


Development Partner

SILVER

Sage MAS 90 ERP
Sage MAS 200 ERP

Company Consolidation



- Matching G/L accounts merged without losing individual transaction history
- Matching Customers merged without losing individual invoices and orders
- Matching Vendors merged without losing individual invoices and check history
- Matching Inventory Items merged without losing separate transactions
- Divisions copied from source to consolidation companies
- Warehouses copied from source to consolidation companies
- Rapid consolidation can be run from menu or from shortcut
- All period sales and usage history are summed for given items, warehouses, customers, and periods.
- Ideal for Business Insights and Crystal Reports®

This **ASI Addition** can merge separate companies into one consolidation company. Once the basic setup is complete, the actual process can be run from the menu or from an outside shortcut started by scheduling software. The consolidation starts by copying the first source company to the consolidation company. If divisions are turned on for any source company, they are turned on for the consolidation company. General Ledger accounts are matched based upon the formatted account number. Any accounts missing in the consolidation company are automatically added. Matching customers and vendors are merged, but customers and vendors missing from the target are automatically added. Detail data, such as transactions, invoices, and orders, are not added together but are renumbered if necessary to maintain their unique identity. All companies must have the same G/L account format and the same fiscal year in order for the consolidation to work.

Mod CON

Copyright © 2008 – Accounting Systems, Inc

For more information:

Phone: 803.252.6154

Fax: 803.252.0062

Email: info@asifocus.com

Web: www.asifocus.com