



ACCOUNTING SYSTEMS  
INCORPORATED

# ASI Additions

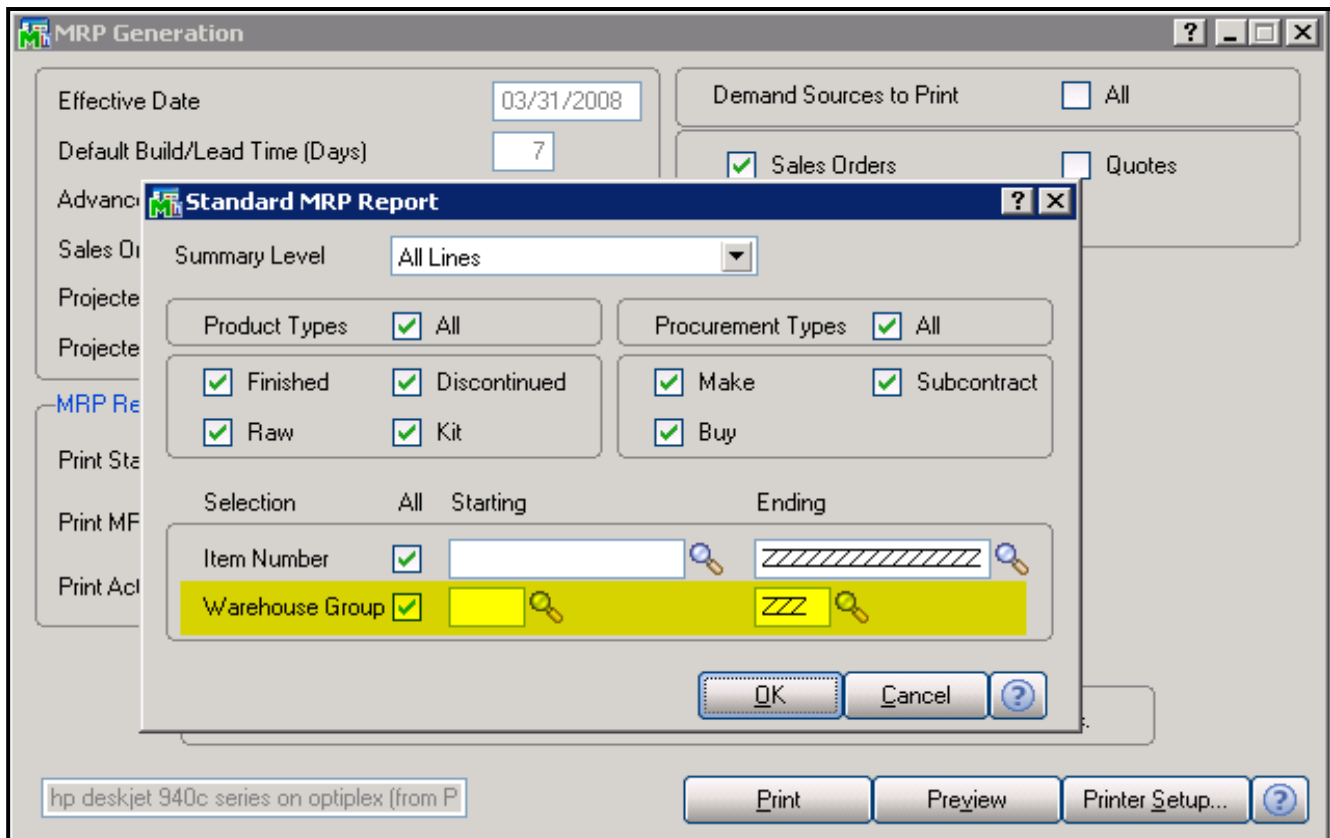


Development Partner

SILVER

Sage MAS 90 ERP  
Sage MAS 200 ERP

## MRP Select by Warehouse Group



The standard Material Requirement Planning (MRP) report requires that you define warehouse groups and will show the warehouse groups on the report, but will not allow you to print the report for selected warehouse groups. This **ASI Addition** adds a Warehouse Group range to the standard MRP report selection, both in the MRP Generation and in the MRP Report menu option. The user can enter a starting and ending Warehouse Group and only MRP records with warehouses in the selected groups will print. This does not affect the MRP generation, only the report.

### Mod MP1

Copyright © 2008 – Accounting Systems, Inc

**For more information:**  
Phone: 803.252.6154  
Fax: 803.252.0062  
Email: [info@asifocus.com](mailto:info@asifocus.com)  
Web: [www.asifocus.com](http://www.asifocus.com)